



# Bearwood Primary and Nursery School Newsletter

LEARNING, ENJOYING,  
& SUCCEEDING  
TOGETHER!

5TH OCTOBER: NEWSLETTER 5

Autumn 1

Email: [school@bearwood.poole.sch.uk](mailto:school@bearwood.poole.sch.uk)

Website: [www.bearwood.poole.sch.uk](http://www.bearwood.poole.sch.uk)

Head Teacher: Mrs Laura Bennett

Contact: 01202 590703

Deputy Head Teacher: Mrs Sally Wall



## Important Dates

### For the Pupils

Walk to School Week  
8th to 12th October

Harvest Festival - 11th October

Flu Vaccinations - 15th October

Build a Bear - 18th October

### Information

Half Marathon - 7th October

### Half Term

Break up Friday 19th October at  
3:30pm

Return Tuesday 30th October at  
9:00am

### Holiday Dates 2018/2019

**AUTUMN TERM 2018**  
Monday 3rd September 2018 to  
Friday 21st December 2018

**SPRING TERM 2019**  
Monday 7th January 2019 to Friday  
5th April 2019

**SUMMER TERM**  
Tuesday 23rd April 2019 to  
Tuesday 23rd July 2019

**INSET DAYS FOR 2018-2019**  
Monday 3rd September 2018  
Monday 29th October 2018  
Monday 7th January 2019  
Wednesday 27th February 2019  
Monday 3rd June 2019



HAMWIC TRUST

EDUCATION

### French Words of the week



Joie de Vivre  
Joy of Life

'Every child has the right to an education which develops their ability, personality and talents to the full. It should encourage children to respect human rights and their own and other cultures. It should also help them to learn to live peacefully, protect the environment and respect other people.'

### Headteacher's Update

At Bearwood, we believe that all children should have the opportunity to access a broad and balanced curriculum. We are proud that we have continued to develop the extra curricular activities on offer, in particular our varied sports, from parkour, climbing, cheerleading, football to just crafty and film club. Next week, we will be sending out an overview of all our clubs led by teachers over the year to help in mapping out the provision for your child. This request came from a parent who wished to balance the costings of external clubs with internal clubs which are free. We hope that many of you find this helpful.



WE'RE HERE FOR YOU

A big thank you to all of you for supporting our Big Coffee Morning for MacMillan, we raised £196.40!

### Car Park

Thank you to all those considerate parents and carers who are using the car park correctly. This is enabling the school to keep the car park open. Currently we have not had to ban any parent from using the car park although we have 8 parents with a first warning. Please be reminded that two warnings and you will be banned from parking on the premises for the safety of the pupils.

### Climbing Equipment

May I remind parents/carers that it is important that children do **not** play on the climbing equipment on school premises before or after school due to Health and Safety Requirements.

### Medals and Awards

Where children have brought in medals and awards from their sports and outside adventures, where appropriate we are inviting them to share their aspirations and showcase their talents over the coming year. If you feel your child has a particular talent and would like to share in assembly through a talk and a demonstration then please let the office know. Thank you.

### We need YOU!

Our school is amazing because of the help that is offered by YOU as volunteers and we need you even more this year! Our display boards are enjoyed by all and we would like to update them, to do this we need help. If you have any time available where you could lend a hand, then please let the Office know - it will be fun!

### Secondary School Placement Meeting

Thank you for all those parents who attended the Year 6 presentation for applying for a Secondary school placement. If you were unable to attend then please find the power point presentation on the school website.

## The following children have been celebrated this week...

	Outstanding Learning	Confident Communicator	Whole Class
<b>Holly 1</b>	Bethany	Laiith	Amazing Writing—full stops and finger spaces
<b>Holly 2</b>	Sonny	Lily	English— creating a guide to Earth
<b>Willow 1</b>	Esme	Zara	Project Work
<b>Willow 2</b>	Nash	Rihanna	Improving discussion skills
<b>Maple 1</b>	Charlie	Jay	Amazing reading discussions
<b>Maple 2</b>	Adam	Isaac	Circuit Training

### House - Leader Board

**1st**  
King Richard - 199

**2nd**  
Runnymede - 107

**3rd**  
Eleanor - 86

**4th**  
Queen Anne - 67

**5th**  
King John - 46

### Best Attendance: Holly 2

#### Weekly Attendance Rollcall

At Bearwood our attendance during the last two terms was one of the lowest in Poole. Children need to be in school in order to achieve their potential. The national average for attendance is 96%; we already have 38 children (17.6%) whose attendance is below this average. Worryingly, we have 14 children (6.48%) who have fallen into the 'persistent absent' group as their attendance is below 90%. Every day counts! Attendance is tracked throughout the year; missing days this early will continue to have an impact on your child's attendance throughout the academic year. If you require help or support with attendance, we are here and keen to work with you.

Please be aware holidays in term time will not be authorised.

	Number of pupils	Attendance	PA	PA %
Oak One	15	97.69%	2	13.33%
One Two	30	97.84%	3	10.0%
Holly One	30	98.59%	2	6.67%
Holly Two	30	99.64%	0	0%
Willow One	27	99.19%	1	3.70%
Willow Two	31	99.10%	1	3.22%
Maple One	27	96.49%	4	14.81%
Maple Two	26	97.43%	1	3.85%

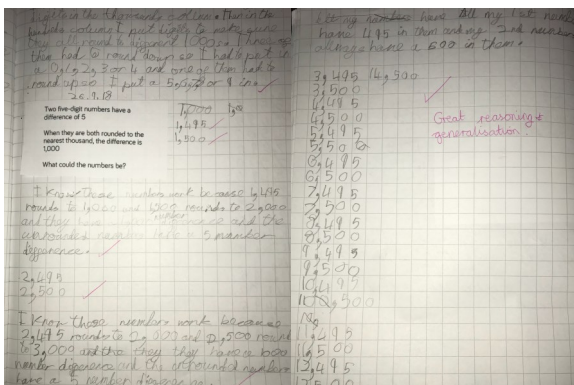
### Rabbit Hutch Required

Does anyone have a rabbit hutch going spare that could be donated to the school? If so, please contact the office.

Many thanks.

### Walk to School Week

We are delighted to announce that our advertised walk to school week will begin next week. In the morning, the gates will be closed at 8.30am and not opened again until 9.10am. In the afternoon, a member of staff will be manning the gate from 3.10-3.40pm. As previously stipulated, unless you are a blue badge holder or have been into the office to collect a pass for exceptional circumstances, your vehicle will not be allowed into the school car park. Please ensure you inform grandparents and child minders who may be collecting your child.



### Celebrating Children's Work

Charlie worked independently through a maths problem this week involving rounding large numbers to the nearest 1000. Once he had found a few examples that fit the given criteria he noticed a pattern in his answers and was able to make a generalisation that would apply. He explained it carefully and clearly and used it to find even more possible answers.

### Upcoming PFA Events

- 11th October - PFA AGM held in Community Room - from 5.30pm
- 12th October - Monster Bash Disco - 6pm to 8pm - Tickets £2 adult/£1 child
- 19th October - End of Term Sweet Sale
- 14th December - Christmas Fair - 3.45pm to 5.30pm

### Cheerleading Club

Anna has advised that she has 4 places available still, if you are interested, please pick up a form from the Office. Thank you.

